

168 Broadway
Garden City Park
New York 11040



Waterproofing and Masonry Specialists

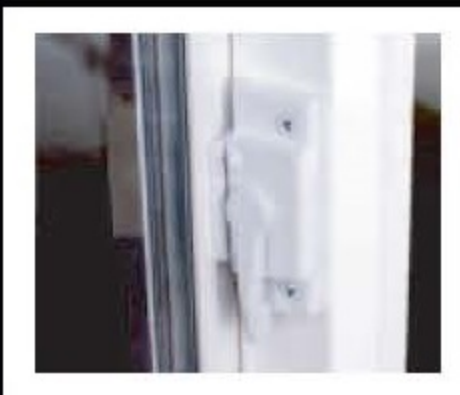
T: 516-747-7727
F: 516-747-7448
www.bocciabros.com



The Easy-Well includes pre-punched eyelets for easy mounting.



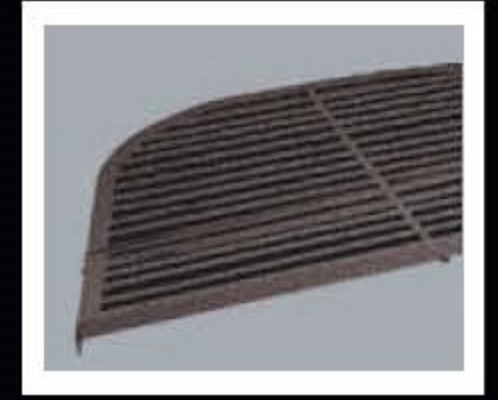
With factory installed well screws, installation has never been easier.



High quality windows include child friendly locks



5



Safety Grates are solid steel for strength and powder coated for durability



Escape Ladders allow quick exit in an emergency



Easy-Bucks 4" profile provides 50% more strength

The Boman Kemp Basement Window System

1 Easy-Buck – Our innovative buck frames are manufactured from 18 gauge galvanized steel and feature a precision engineered four-inch profile that offers superior strength and lifetime durability.

2 Easy-Well - Also made from heavy-duty 18 gauge galvanized steel. It features a one-inch profile with expertly designed double-ribbed corners for added strength, reducing the need for extra bracing.

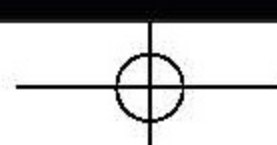
3 Window - This double insulated vinyl window comes equipped with a sliding sash, screen, and is lockable from the inside.

4 Safety Grate - The safety grate is made of rolled angle iron steel and steel safety bars. It is designed to keep people and pets out of the Easy-Well and hold the weight of standard foot traffic.

5 Cover - Made of a polycarbonate plastic, the cover is designed to be used along with the safety grate to keep debris and excess water out of the Easy-Well.

6 Escape Ladder - The safety ladder is designed to assist people in emergency escape and is attached to the back of the Easy-Well.

www.boman-kemp.com/products.html



168 Broadway
Garden City Park
New York 11040



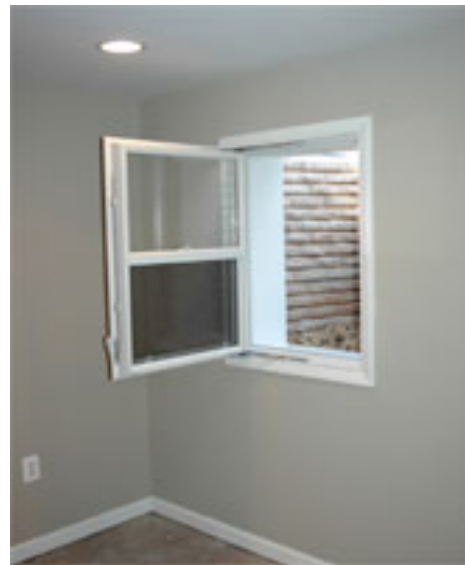
T: 516-747-7727
F: 516-747-7448
www.bocciabros.com

BASEMENT EMERGENCY ESCAPE WINDOW SYSTEMS

Building Code (IRC Section R310.1) mandates; “basements with habitable space and every sleeping room shall have at least one openable emergency escape and rescue window”

Boccia Inc., having served basement needs since 1955, pioneered this code requisite by becoming one of the first to distribute and install basement emergency egress windows

Enhancing the original systems, they offer a compact single hung in-swing egress window that is the smallest window designed to meet or exceed the emergency egress code requirements. These dual function vinyl windows operate as a normal single hung window with the lower sash opening for ventilation and, in the event of an emergency, a hinged window that swings into the room creating a 5.7 square foot opening.



Another upgraded improvement is an 18-gauge steel emergency egress window well that simulates a stacked stone appearance. Looking through the window from the inside is the view of an expensive stone façade adding beauty and elegance for a fraction of the cost. All of these features in addition to the well grate, cover and ladder provide the most beautiful and functional window egress system available.